



Western Nepal: Training masons, including women, on disaster-resilient construction techniques while building a school. We have been working in western Nepal since 2016 because many scientists are concerned about a future large earthquake in this particular region. The area is growing rapidly, earthquake risk awareness is low, and earthquake-resistant construction is uncommon.

Note from the President



GeoHazards International (GHI) works to save lives by empowering at-risk communities worldwide to build resilience *ahead of* disasters and climate impacts. Since our inception over 30 years ago, we have emphasized genuine local engagement, as we know that local leaders are best placed to make lasting change. We believe in investing in people and communities.

Building disaster resilience is a journey. Our experience shows that a long-term approach is essential for sustainable outcomes. It takes continuous effort, persistence, and adapting along the way. This is why maintaining momentum in our core communities is at the heart of how we work.

This year has been particularly rewarding. Our work included constructing disaster-resilient schools in Haiti and Nepal that integrated hands-on training for local builders. We also launched a multi-year effort to better understand and address how geological hazards and their impacts are affected by climate change. Stay tuned for what we learn.

Disasters are on the rise worldwide and communities with fewer resources remain disproportionately affected. With your support, we can continue working toward a future in which all people can thrive despite natural hazards and climate impacts.

- Veronica Cedillos



2022 Revenue, \$1.57M

Disaster Resilience

is an ongoing journey...

Understanding the Risk

We work with communities to:

- Provide a science/evidence-based look at disaster risk
- Identify potential damage and consequences to infrastructure, people & society
- Communicate risk in ways that resonate with all community members
- Bring diverse voices together to map a way forward

Informing Regulatory Policies & Plans



Bhutan: Stakeholders discuss the recent GHI-led studies of earthquake risk to buildings in the capital, Thimphu. This work is a key step in integrating disaster risk in plans and policies.

July 2022

Addressing Vulnerabilities



India: GHI-led team shares recommendations to improve the seismic resilience of power infrastructure. Preventing long & widespread outages during disasters can save lives.

March 2023

Co-Developing Solutions

Strengthening Local Capacities Along the Way

Creating Resilient Communities

Building Resilient Infrastructure



Haiti (southern): Local builders construct a disaster-resilient school that can also serve as a shelter. This GHI-led effort included hands-on training in disaster-resilient construction.

August 2023

Inspiring Community Preparedness



Haiti (northern): With GHI support, thousands of students practice evacuating based on locally-created plans. These schools are located in low-lying, high tsunami risk areas.

May 2023

Keep Improving & Learning by:

- Sharing best practices from one country to another
- Adapting our strategies to reflect changing disaster risk
- Pioneering new ways to build resilient communities

... our sustained efforts & genuine local engagement lead to

Enduring Impact



"Never doubt that a small group of thoughtful, committed citizens can change the world. Indeed, it is the only thing that ever has."

- Margaret Mead

Project Summary

October 2022 - October 2023

	Country
Family Disaster Preparedness	Haiti & DR*
Support for Disaster Resilience Programs in the Caribbean	Haiti & DR*
Timoun an Aksyon (Kids in Action)	Haiti
Engaging Youth in Disaster Resilience	Haiti
Housing and School Recovery from the 2021 Earthquake	Haiti
Post 2021 Earthquake Haiti Resilience Effort	Haiti
Post Earthquake Community-Sourced Data Collection	Haiti
Supporting Thimphu's Path to Safer Buildings	Bhutan
Disaster Risk Management & Climate Change Adaptation Policy	Bhutan
Support for Disaster Resilience Programs in South Asia	Bhutan & India
Disaster Resilience of Power Infrastructure in Guwahati	India
Informing a Strategy for Resilient/Equitable Schools in Nagaland	India
Local Climate Risk Assessments & Training in Kerala	India
Earthquake Desks Program Support	Nepal
Western Nepal School Earthquake Safety Project	Nepal
Fire Safety of COVID-Designated Health Facilities	Nepal & Maldives
Building Regulatory Capacity Assessment	SL* & Liberia
Rapid Diagnostics of School Infrastructure	BF* & Senegal
Climate Change Program Support	Philippines & Global
Next Generation Scenarios: Studies & Guidance	Global
Effects on Geological Hazards from Climate Change	Global

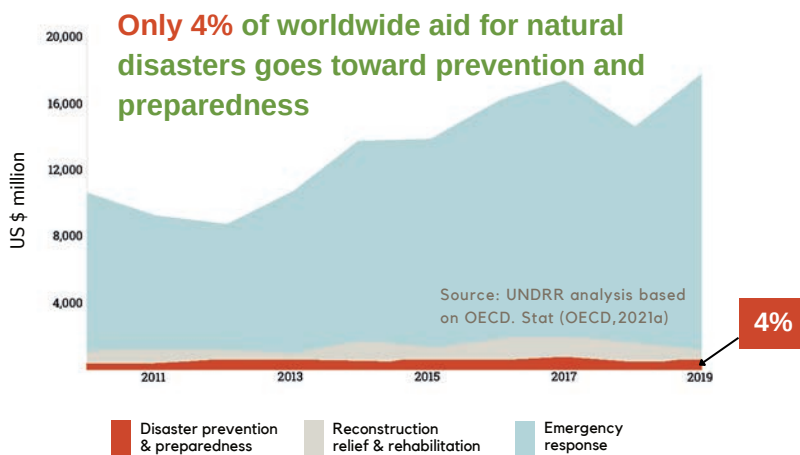
*DR: Dominican Republic; SL: Sierra Leone; BF: Burkina Faso

Focus Areas

Mentoring & Training	Schools & Youth	Hospitals	Policy & Planning	Assessments & Scenarios	Novel Approaches	Preparedness
	X			X		X
X	X				X	X
X	X				X	X
	X				X	X
	X		X	X		
X	X	X		X		X
X	X			X	X	X
			X	X		X
		X	X	X		
X	X	X	X	X		X
				X		
X	X		X	X		
	X			X		
X	X				X	X
			X	X	X	
			X	X	X	X

Funding Sources:

International Development Agency
Individual/Foundation
Corporation



This is **WHY** we do what we do!

GHI MISSION To save lives by empowering at-risk communities worldwide to build resilience *ahead of* disasters and climate impacts.

GeoHazards International
6701 Koll Center Pkwy, Suite 250
Pleasanton, CA 94566

Phone: +1.650.614.9050
Email: info@geohaz.org

Bhutan · Dominican Republic
Haiti · India · Nepal · U.S.A.

www.geohaz.org